

Maths Homework Y5 Mr Masingiri

Date set: 4th May 2021
Date due: 10th May 2021
You need to complete both sections

Section 1 - You must show your working out for questions 1 - 6.

1. $65,382 = \underline{\hspace{2cm}} - 23,429$

2. $367 \times 40 = \underline{\hspace{2cm}}$

3. $\underline{\hspace{2cm}} + 125 = 324 + 256$

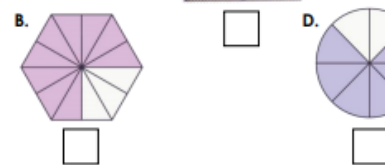
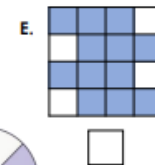
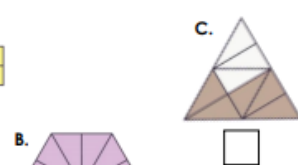
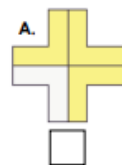
4. $54 \times 65 = \underline{\hspace{2cm}}$

5. $792 \div 3 = \underline{\hspace{2cm}}$

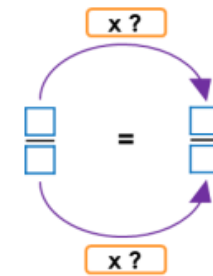
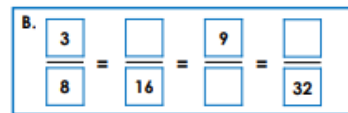
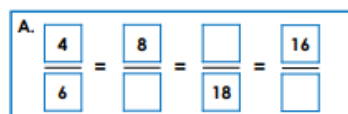
6. Purple pens are sold in boxes of 6. How many boxes are needed to give 275 children a pen each?

Section 2 - Equivalent Fractions

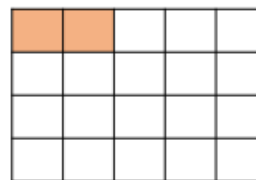
1. Mark with an 'X' the shapes that have $\frac{3}{4}$ shaded.



2. Complete the sequence of equivalent fractions. Use the diagram to help you.



3. Jasmin shades this shape. She says,



Two-fifths of my shape is shaded.

Explain her mistake.

Maths Homework Y5 Mr Masingiri

Date set: 4th May 2021
Date due: 10th May 2021
You need to complete both sections

Section 1 - You must show your working out for questions 1 - 6.

1. $65,382 = \underline{\hspace{2cm}} - 23,429$

2. $367 \times 40 = \underline{\hspace{2cm}}$

3. $\underline{\hspace{2cm}} + 125 = 324 + 256$

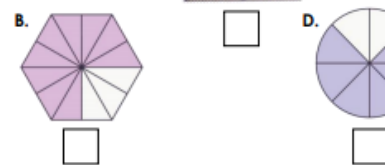
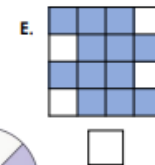
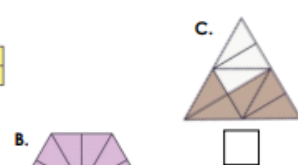
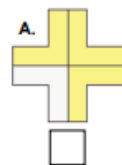
4. $54 \times 65 = \underline{\hspace{2cm}}$

5. $792 \div 3 = \underline{\hspace{2cm}}$

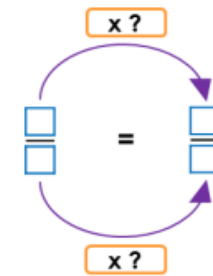
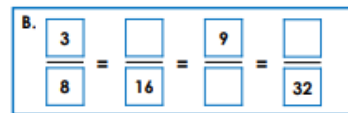
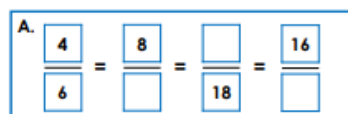
6. Purple pens are sold in boxes of 6. How many boxes are needed to give 275 children a pen each?

Section 2 -Equivalent Fractions

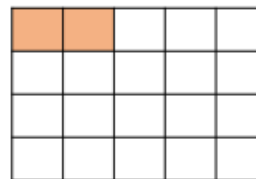
1. Mark with an 'X' the shapes that have $\frac{3}{4}$ shaded.



2. Complete the sequence of equivalent fractions. Use the diagram to help you.



3. Jasmin shades this shape. She says,



Two-fifths of my shape is shaded.

Explain her mistake.