



Phases of the Moon

twinkl

Shapes of the Moon



Full Moon



New Moon



Crescent

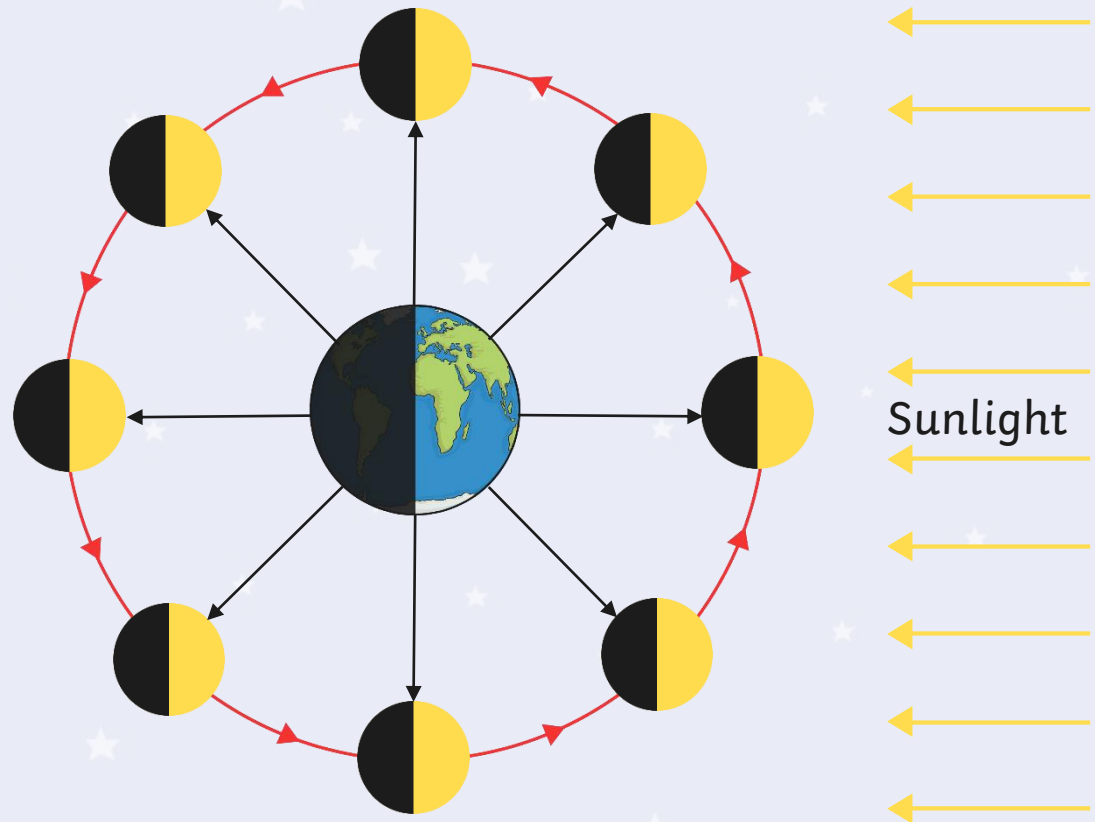


Gibbous

Why Does the Moon Appear to Change Shape?

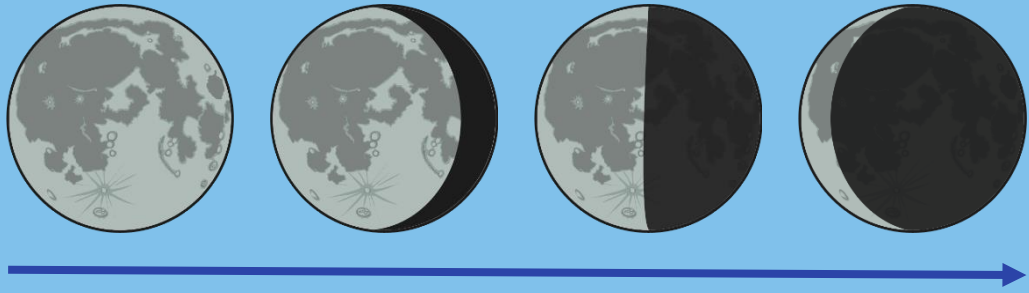
The Moon reflects the Sun's light.

What part we see of the Moon depends on where the Moon is when orbiting the Earth.

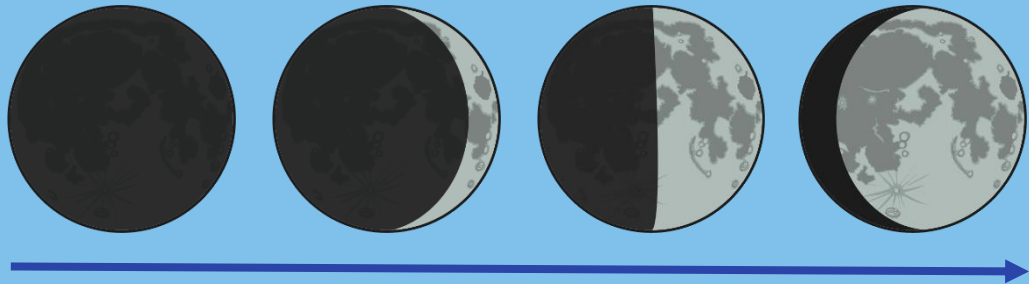


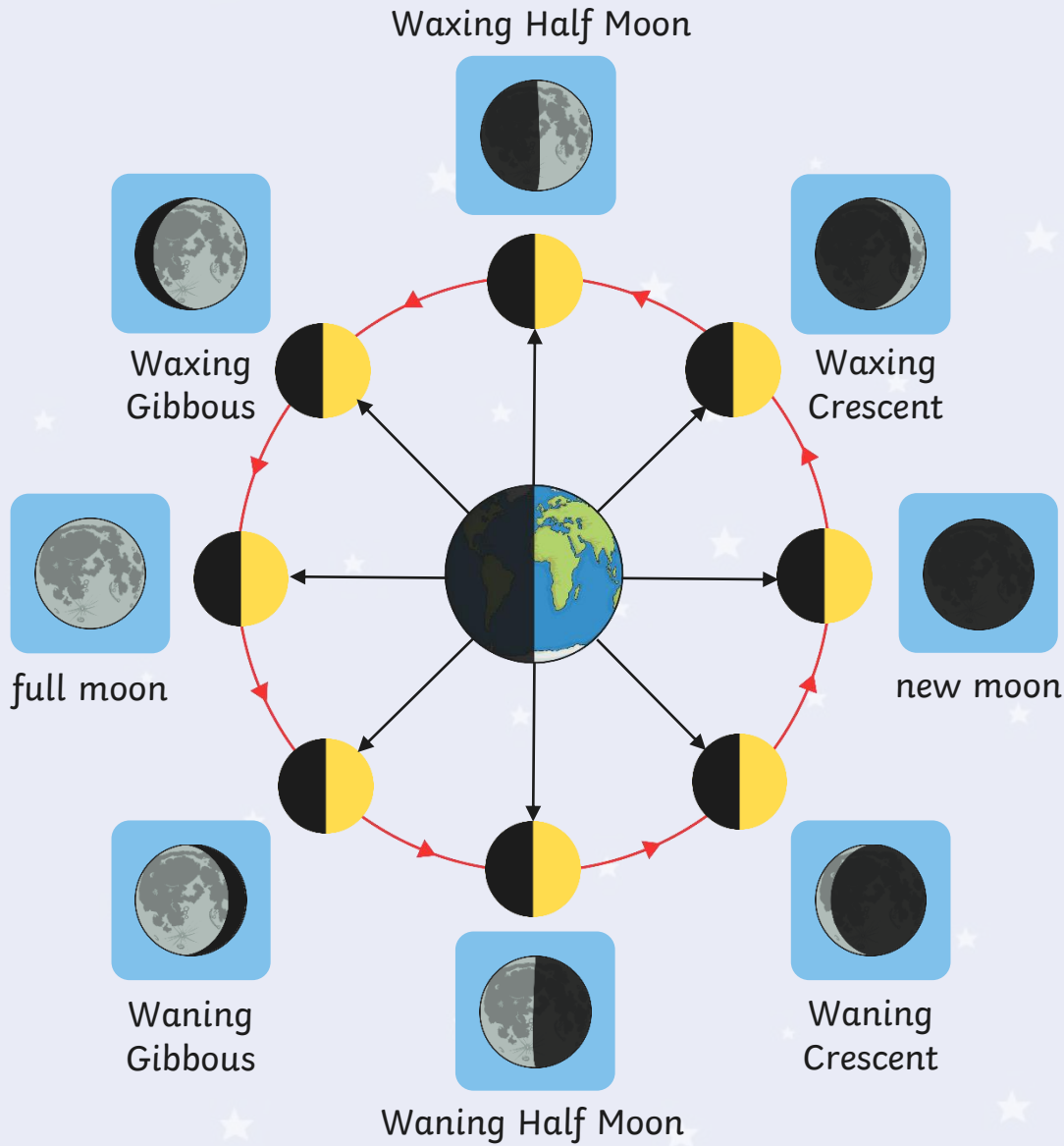
Waxing and Waning

Waning means that we can see less of the Moon – the moon looks smaller to us.



Waxing means that we can see more of the Moon – the moon looks bigger to us.

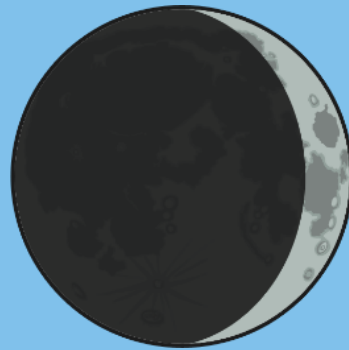




Are these moons waxing or waning?



Waning
Gibbous



Waxing
Crescent




Waning
Half Moon



Waning
Crescent

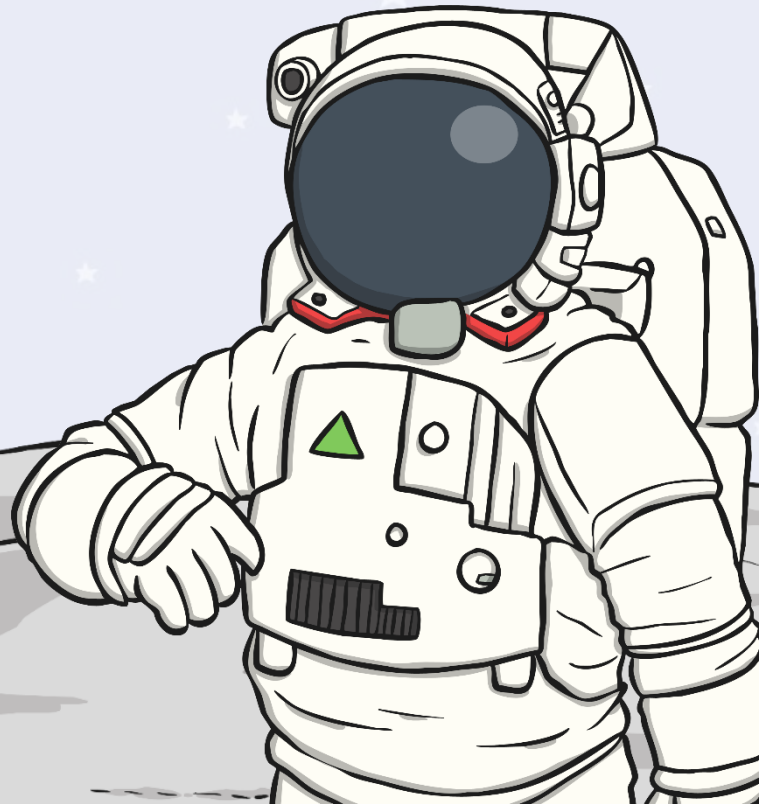
Do you know what a blue moon is?



A Blue Moon is a term
for the second of two
full moons in a single
calendar month.

Another definition says
a Blue Moon is the
third of four full moons
in a single season.

Who was the first
person on the Moon?



Neil Armstrong, Apollo 11, 1969